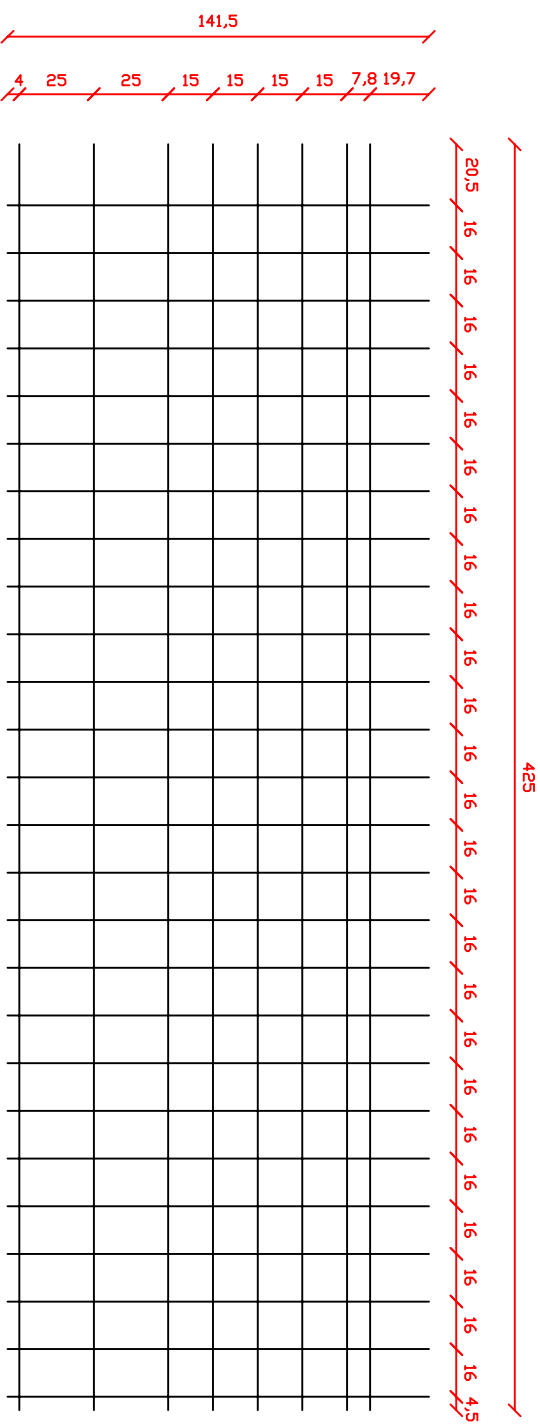
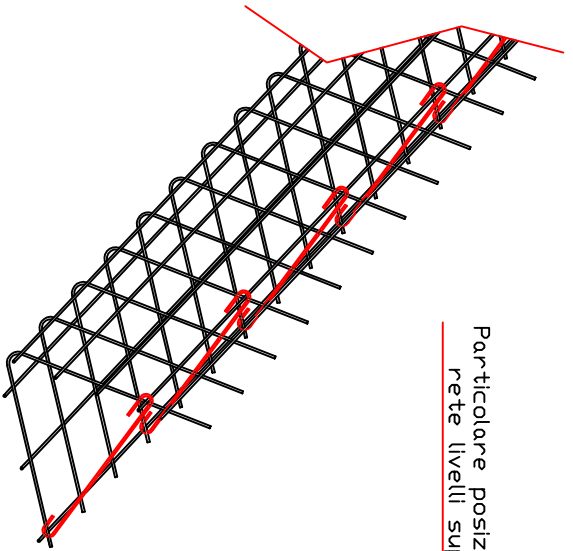


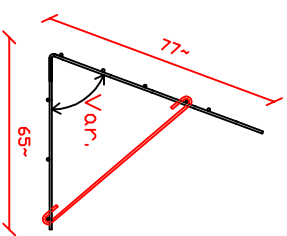
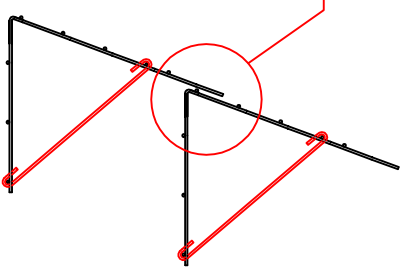
Pannello non piegato 425x141,5
 ø8 maglie variabili Kg. 28,5/cad.



Mq. utili fronte
 2,8~/cad.



Particolare posizionamento
 rete livelli superiori



Picchetto
 Nr.3 ø8 a pannello
 (solo su richiesta)

Tiranti ø8 nr. 9 per pannello	
60°	59
63°	63
65°	65
68°	66
70°	69

CASSERI PER TERRE ARMATE



LAVORAZIONE ACCIAIO PER C.A. / TRAVI TRALICGATE IN C.A.
 Stabilimento di Cimengo : Loc. Al Ponte-zona Industriale tel. 0465-621901
 Stabilimento di Lavis : Via al Vodt 0465-621901